

STANDARD ARRIVAL CHART - INSTRUMENT

RJAA / NARITA INTL

RNAV STAR RWY16R/16L

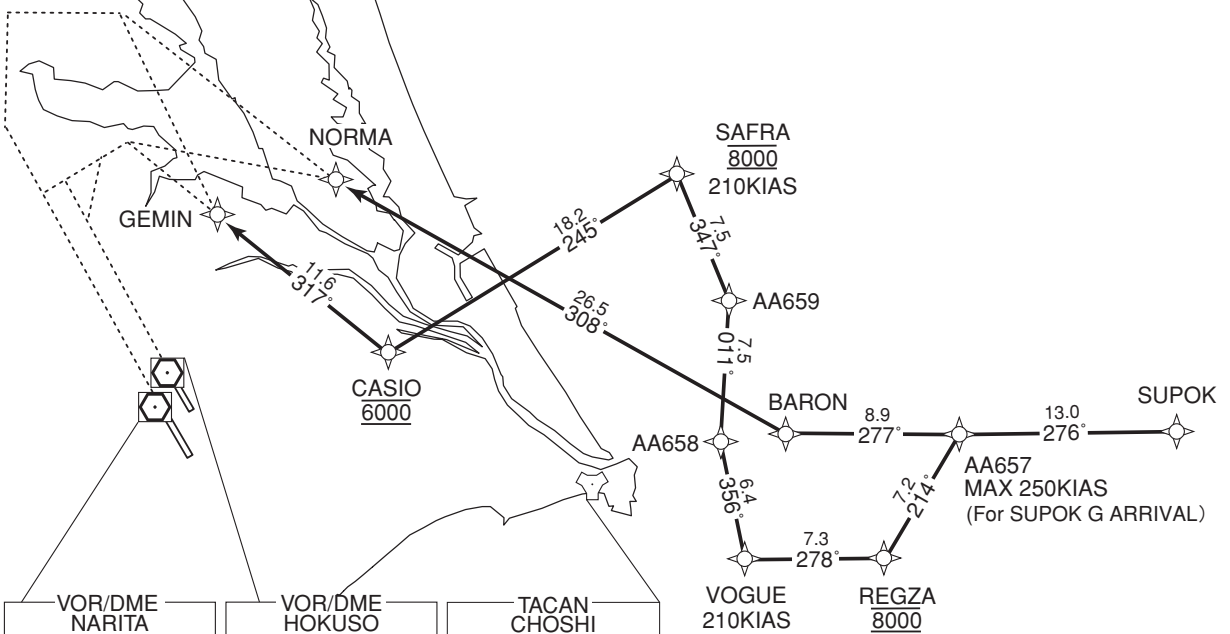
SUPOK G ARRIVAL SUPOK N ARRIVAL	RNAV 1
--	---------------

Note 1) DME/DME/IRU or GNSS required.
2) RADAR service required.

<p>MHA 4000 MAX 230KIAS(at or below FL140) MAX 240KIAS(above FL140)</p> <p style="text-align: center;">CASIO</p> <p>1MIN(at or below FL140) 1.5MIN(above FL140)</p>	<p>MHA 6000 MAX 230KIAS(at or below FL140) MAX 240KIAS(above FL140)</p> <p style="text-align: center;">BARON</p> <p>1MIN(at or below FL140) 1.5MIN(above FL140)</p>	<p>MHA 5000 MAX 230KIAS(at or below FL140) MAX 240KIAS(above FL140)</p> <p style="text-align: center;">SUPOK</p> <p>1MIN(at or below FL140) 1.5MIN(above FL140)</p>
---	---	---

VAR 8° W(2019)

SUPOK N ARRIVAL



<p>VOR/DME NARITA 117.9 NRE CH-126X 35°46'56"N/140°21'45"E 200FT</p>	<p>VOR/DME HOKUSO 115.0 HKE CH-97X 35°48'51"N/140°22'18"E 200FT</p>	<p>TACAN CHOSHI 1170 CVT CH-83X 35°43'36"N/140°48'00"E 200FT</p>
--	---	--

SUPOK G ARRIVAL

<p>MHA 4000 MAX 230KIAS(at or below FL140) MAX 240KIAS(above FL140)</p> <p style="text-align: center;">GEMIN</p> <p>1MIN(at or below FL140) 1.5MIN(above FL140)</p>	<p>MHA 6000 MAX 230KIAS(at or below FL140) MAX 240KIAS(above FL140)</p> <p style="text-align: center;">NORMA</p> <p>1MIN(at or below FL140) 1.5MIN(above FL140)</p>
---	---

CHANGE : New PROC

STANDARD ARRIVAL CHART - INSTRUMENT

RJAA / NARITA INTL

RNAV STAR RWY16R/16L

SUPOK G ARRIVAL

From SUPOK, to AA657, to REGZA at 8000FT, to VOGUE, to AA658, to AA659, to SAFRA at 8000FT, to CASIO at 6000FT, to GEMIN.

Critical DME	-
DME GAP	-
Inappropriate Nav aids	See AD1.1.6.10.3. Inappropriate NAVAIDs for RNAV1

Serial Number	Path Descriptor	Waypoint Identifier	Fly Over	Course °M(°T)	Magnetic Variation	Distance (NM)	Turn Direction	Altitude (FT)	Speed (KIAS)	Vertical Angle	Navigation Specification
001	IF	SUPOK	-	-	-7.5	-	-	-	-	-	RNAV1
002	TF	AA657	-	276 (268.4)	-7.5	13.0	-	-	-250	-	RNAV1
003	TF	REGZA	-	214 (206.8)	-7.5	7.2	-	8000	-	-	RNAV1
004	TF	VOGUE	-	278 (270.3)	-7.5	7.3	-	-	210	-	RNAV1
005	TF	AA658	-	356 (348.4)	-7.5	6.4	-	-	-	-	RNAV1
006	TF	AA659	-	011 (003.1)	-7.5	7.5	-	-	-	-	RNAV1
007	TF	SAFRA	-	347 (339.6)	-7.5	7.5	-	8000	210	-	RNAV1
008	TF	CASIO	-	245 (237.6)	-7.5	18.2	-	6000	-	-	RNAV1
009	TF	GEMIN	-	317 (309.1)	-7.5	11.6	-	-	-	-	RNAV1

Path	Waypoint Identifier	Inbound Course °M(°T)	Magnetic Variation	Outbound Time (MIN)	Outbound Distance (NM)	Turn Direction	Minimum Altitude (FT)	Maximum Altitude (FT)	Speed (KIAS)	Navigation Specification
Hold	SUPOK	276 (268.6)	-7.5	1.0(-14000) 1.5(+14001)	-	R	5000	-	-230(-14000) -240(+14001)	RNAV1
Hold	CASIO	316 (308.6)	-7.5	1.0(-14000) 1.5(+14001)	-	R	4000	-	-230(-14000) -240(+14001)	RNAV1
Hold	GEMIN	317 (309.1)	-7.5	1.0(-14000) 1.5(+14001)	-	R	4000	-	-230(-14000) -240(+14001)	RNAV1

CHANGE : New PROC

STANDARD ARRIVAL CHART - INSTRUMENT

RJAA / NARITA INTL

RNAV STAR RWY16R/16L

SUPOK N ARRIVAL

From SUPOK, to AA657, to BARON, to NORMA.

Critical DME	-
DME GAP	-
Inappropriate Nav aids	See AD1.1.6.10.3. Inappropriate NAVAIDS for RNAV1

Serial Number	Path Descriptor	Waypoint Identifier	Fly Over	Course °M(°T)	Magnetic Variation	Distance (NM)	Turn Direction	Altitude (FT)	Speed (KIAS)	Vertical Angle	Navigation Specification
001	IF	SUPOK	-	-	-7.5	-	-	-	-	-	RNAV1
002	TF	AA657	-	276 (268.4)	-7.5	13.0	-	-	-	-	RNAV1
003	TF	BARON	-	277 (270.0)	-7.5	8.9	-	-	-	-	RNAV1
004	TF	NORMA	-	308 (300.0)	-7.5	26.5	-	-	-	-	RNAV1

Path	Waypoint Identifier	Inbound Course °M(°T)	Magnetic Variation	Outbound Time (MIN)	Outbound Distance (NM)	Turn Direction	Minimum Altitude (FT)	Maximum Altitude (FT)	Speed (KIAS)	Navigation Specification
Hold	SUPOK	276 (268.6)	-7.5	1.0(-14000) 1.5(+14001)	-	R	5000	-	-230(-14000) -240(+14001)	RNAV1
Hold	BARON	277 (270.0)	-7.5	1.0(-14000) 1.5(+14001)	-	R	6000	-	-230(-14000) -240(+14001)	RNAV1
Hold	NORMA	308 (300.0)	-7.5	1.0(-14000) 1.5(+14001)	-	R	6000	-	-230(-14000) -240(+14001)	RNAV1

Waypoint Coordinates

Waypoint Identifier	Coordinates	Waypoint Identifier	Coordinates
AA657	354551.6N / 1411209.1E	NORMA	355900.8N / 1403254.0E
AA658	354540.9N / 1405734.1E	REGZA	353925.8N / 1410809.1E
AA659	355307.6N / 1405804.5E	SAFRA	360006.9N / 1405452.2E
BARON	354551.0N / 1410112.0E	SUPOK	354614.1N / 1412810.0E
CASIO	355021.4N / 1403556.1E	VOGUE	353927.6N / 1405908.4E
GEMIN	355738.6N / 1402450.7E		

CHANGE : New PROC