

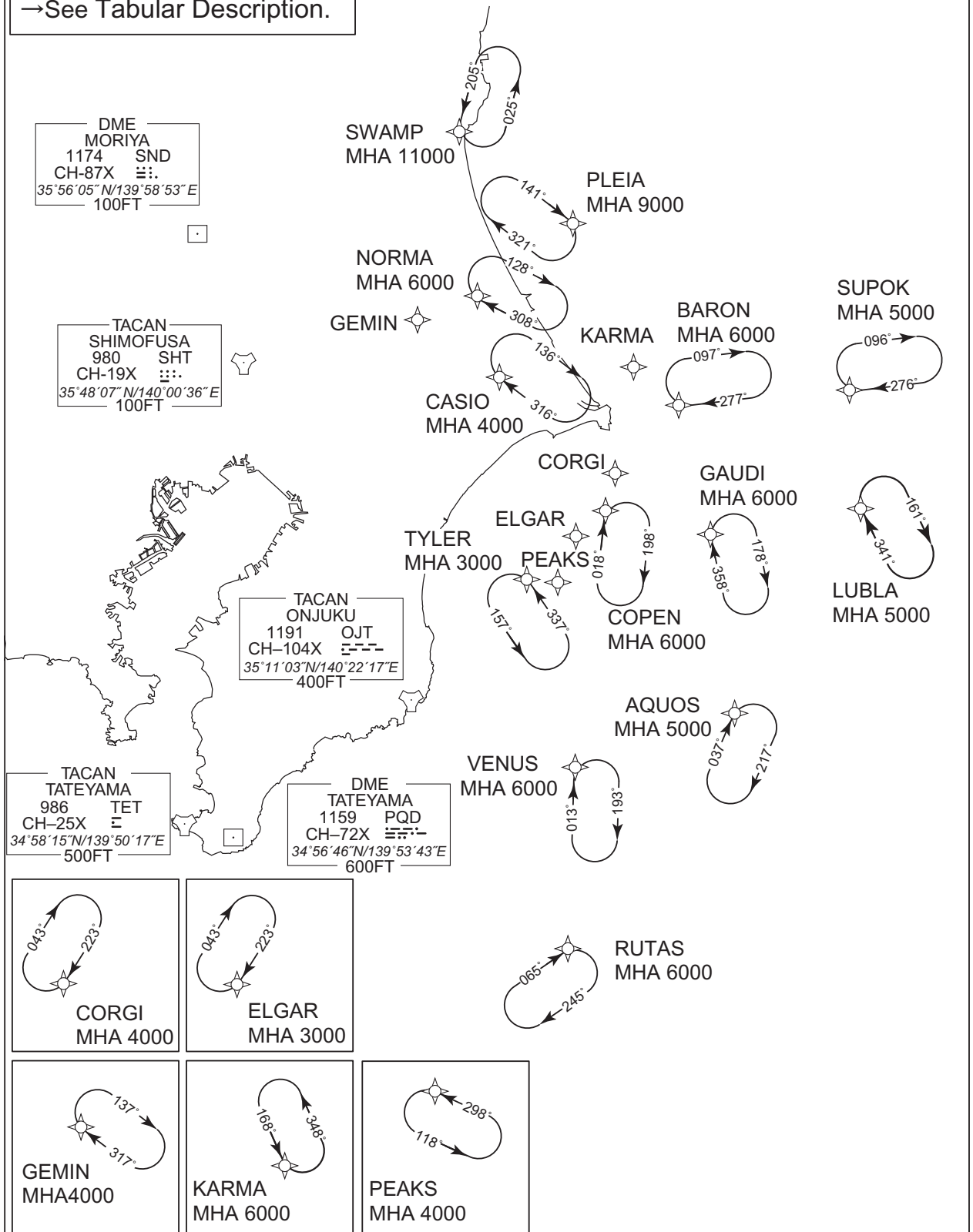
RJAA / NARITA INTL

RNAV HLDG PATTERN

Note 1) DME/DME/IRU or GNSS required.
2) RADAR service required.

RNAV 1

1.Outbound Time / Distance
2.Speed
→See Tabular Description.



CHANGE : PEAKS established

RJAA / NARITA INTL

RNAV HLDG PATTERN

Path	Waypoint Identifier	Inbound Course 'M('T)	Magnetic Variation	Outbound Time (MIN)	Outbound Distance (NM)	Turn Direction	Minimum Altitude (FT)	Maximum Altitude (FT)	Speed (KIAS)	Navigation Specification
Hold	AQUOS	037 (029.1)	-7.5	1.0(-14000) 1.5(+14001)	—	R	5000	—	-230(-14000) -240(+14001)	RNAV1
Hold	BARON	277 (270.0)	-7.5	1.0(-14000) 1.5(+14001)	—	R	6000	—	-230(-14000) -240(+14001)	RNAV1
Hold	CASIO	316 (308.6)	-7.5	1.0(-14000) 1.5(+14001)	—	R	4000	—	-230(-14000) -240(+14001)	RNAV1
Hold	COPEN	018 (010.5)	-7.5	1.0(-14000) 1.5(+14001)	—	R	6000	—	-230(-14000) -240(+14001)	RNAV1
Hold	CORGI	223 (215.8)	-7.5	1.0(-14000) 1.5(+14001)	—	R	4000	—	-230(-14000) -240(+14001)	RNAV1
Hold	ELGAR	223 (215.7)	-7.5	1.0(-14000) 1.5(+14001)	—	R	3000	—	-230(-14000) -240(+14001)	RNAV1
Hold	GAUDI	358 (351.0)	-7.5	1.0(-14000) 1.5(+14001)	—	R	6000	—	-230(-14000) -240(+14001)	RNAV1
Hold	GEMIN	317 (309.1)	-7.5	1.0(-14000) 1.5(+14001)	—	R	4000	—	-230(-14000) -240(+14001)	RNAV1
Hold	KARMA	168 (160.3)	-7.5	1.0(-14000) 1.5(+14001)	—	L	6000	—	-230(-14000) -240(+14001)	RNAV1
Hold	LUBLA	341 (333.9)	-7.5	1.0(-14000) 1.5(+14001)	—	R	5000	—	-230(-14000) -240(+14001)	RNAV1
Hold	NORMA	308 (300.0)	-7.5	1.0(-14000) 1.5(+14001)	—	R	6000	—	-230(-14000) -240(+14001)	RNAV1
Hold	PEAKS	298 (290.2)	-7.5	1.0(-14000) 1.5(+14001)	—	L	4000	—	-230(-14000) -240(+14001)	RNAV1
Hold	PLEIA	141 (133.1)	-7.5	1.0(-14000) 1.5(+14001)	—	R	9000	—	-230(-14000) -240(+14001)	RNAV1
Hold	RUTAS	065 (057.9)	-7.5	1.0(-14000) 1.5(+14001)	—	R	6000	—	-230(-14000) -240(+14001)	RNAV1
Hold	SUPOK	276 (268.6)	-7.5	1.0(-14000) 1.5(+14001)	—	R	5000	—	-230(-14000) -240(+14001)	RNAV1
Hold	SWAMP	205 (197.0)	-7.5	1.0(-14000) 1.5(+14001)	—	L	11000	—	-230(-14000) -240(+14001)	RNAV1
Hold	TYLER	337 (329.8)	-7.5	1.0(-14000) 1.5(+14001)	—	L	3000	—	-230(-14000) -240(+14001)	RNAV1
Hold	VENUS	013 (005.8)	-7.5	1.0(-14000) 1.5(+14001)	—	R	6000	—	-230(-14000) -240(+14001)	RNAV1

CHANGE : PEAKS established

RJAA / NARITA INTL

RNAV HLDG PATTERN

Waypoint Coordinates

Waypoint Identifier	Coordinates	Waypoint Identifier	Coordinates
AQUOS	351229.7N / 1410942.5E	LUBLA	353235.0N / 1412550.8E
BARON	354551.0N / 1410112.0E	NORMA	355900.8N / 1403254.0E
CASIO	355021.4N / 1403556.1E	PEAKS	352507.2N / 1404352.7E
COPEN	353303.7N / 1404939.2E	PLEIA	360734.8N / 1404745.4E
CORGI	353829.8N / 1405138.9E	RUTAS	344349.3N / 1404034.2E
ELGAR	353129.2N / 1404527.4E	SUPOK	354614.1N / 1412810.0E
GAUDI	353002.4N / 1410418.1E	SWAMP	361914.4N / 1403217.0E
GEMIN	355738.6N / 1402450.7E	TYLER	352650.5N / 1403807.8E
KARMA	355042.9N / 1405512.4E	VENUS	350440.1N / 1404309.7E

CHANGE : PEAKS established