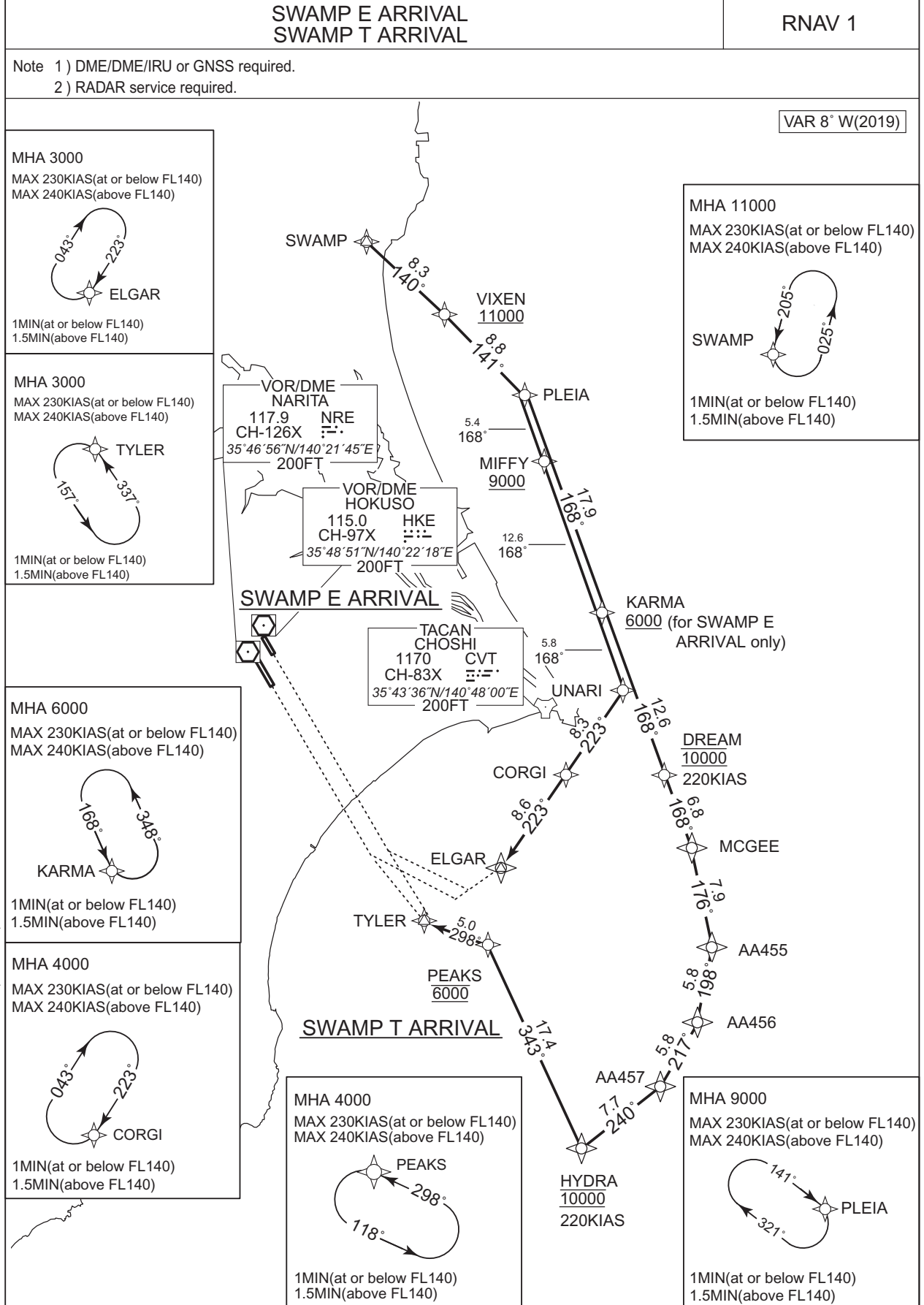


STANDARD ARRIVAL CHART - INSTRUMENT

RJAA / NARITA INTL

RNAV STAR RWY34L/34R



CHANGE: MCGEE renamed. HLDG Pattern (PEAKS) established.

STANDARD ARRIVAL CHART - INSTRUMENT

RJAA / NARITA INTL

RNAV STAR RWY34L/34R

SWAMP E ARRIVAL

From SWAMP, to VIXEN at or above 11000FT, to PLEIA, to MIFFY at or above 9000FT, to KARMA at or above 6000FT, to UNARI, to CORGI, to ELGAR.

Critical DME	-
DME GAP	-
Inappropriate Navaids	See AD1.1.6.10.3. Inappropriate NAVAIDs for RNAV1

Serial Number	Path Descriptor	Waypoint Identifier	Fly Over	Course °M(°T)	Magnetic Variation	Distance (NM)	Turn Direction	Altitude (FT)	Speed (KIAS)	Vertical Angle	Navigation Specification
001	IF	SWAMP	-	-	-7.5	-	-	-	-	-	RNAV1
002	TF	VIXEN	-	140 (133.0)	-7.5	8.3	-	+11000	-	-	RNAV1
003	TF	PLEIA	-	141 (133.0)	-7.5	8.8	-	-	-	-	RNAV1
004	TF	MIFFY	-	168 (160.3)	-7.5	5.4	-	+9000	-	-	RNAV1
005	TF	KARMA	-	168 (160.3)	-7.5	12.6	-	+6000	-	-	RNAV1
006	TF	UNARI	-	168 (160.4)	-7.5	5.8	-	-	-	-	RNAV1
007	TF	CORGI	-	223 (215.8)	-7.5	8.3	-	-	-	-	RNAV1
008	TF	ELGAR	-	223 (215.7)	-7.5	8.6	-	-	-	-	RNAV1

Path	Waypoint Identifier	Inbound Course °M(°T)	Magnetic Variation	Outbound Time (MIN)	Outbound Distance (NM)	Turn Direction	Minimum Altitude (FT)	Maximum Altitude (FT)	Speed (KIAS)	Navigation Specification
Hold	SWAMP	205 (197.0)	-7.5	1.0(-14000) 1.5(+14001)	-	L	11000	-	-230(-14000) -240(+14001)	RNAV1
Hold	PLEIA	141 (133.1)	-7.5	1.0(-14000) 1.5(+14001)	-	R	9000	-	-230(-14000) -240(+14001)	RNAV1
Hold	KARMA	168 (160.3)	-7.5	1.0(-14000) 1.5(+14001)	-	L	6000	-	-230(-14000) -240(+14001)	RNAV1
Hold	CORGI	223 (215.8)	-7.5	1.0(-14000) 1.5(+14001)	-	R	4000	-	-230(-14000) -240(+14001)	RNAV1
Hold	ELGAR	223 (215.7)	-7.5	1.0(-14000) 1.5(+14001)	-	R	3000	-	-230(-14000) -240(+14001)	RNAV1

CHANGE : New PROC

STANDARD ARRIVAL CHART - INSTRUMENT

RJAA / NARITA INTL

RNAV STAR RWY34L/34R

SWAMP T ARRIVAL

From SWAMP, to VIXEN at or above 11000FT, to PLEIA, to KARMA, to DREAM at 10000FT, to MCGEE, to AA455, to AA456, to AA457, to HYDRA at 10000FT, to PEAKS at 6000FT, to TYLER.

Critical DME	-
DME GAP	-
Inappropriate Navaids	See AD1.1.6.10.3. Inappropriate NAVAIDs for RNAV1

Serial Number	Path Descriptor	Waypoint Identifier	Fly Over	Course °M(°T)	Magnetic Variation	Distance (NM)	Turn Direction	Altitude (FT)	Speed (KIAS)	Vertical Angle	Navigation Specification
001	IF	SWAMP	-	-	-7.5	-	-	-	-	-	RNAV1
002	TF	VIXEN	-	140 (133.0)	-7.5	8.3	-	+11000	-	-	RNAV1
003	TF	PLEIA	-	141 (133.0)	-7.5	8.8	-	-	-	-	RNAV1
004	TF	KARMA	-	168 (160.3)	-7.5	17.9	-	-	-	-	RNAV1
005	TF	DREAM	-	168 (160.4)	-7.5	12.6	-	10000	220	-	RNAV1
006	TF	MCGEE	-	168 (160.4)	-7.5	6.8	-	-	-	-	RNAV1
007	TF	AA455	-	176 (168.2)	-7.5	7.9	-	-	-	-	RNAV1
008	TF	AA456	-	198 (190.7)	-7.5	5.8	-	-	-	-	RNAV1
009	TF	AA457	-	217 (209.8)	-7.5	5.8	-	-	-	-	RNAV1
010	TF	HYDRA	-	240 (232.1)	-7.5	7.7	-	10000	220	-	RNAV1
011	TF	PEAKS	-	343 (335.1)	-7.5	17.4	-	6000	-	-	RNAV1
012	TF	TYLER	-	298 (290.2)	-7.5	5.0	-	-	-	-	RNAV1

Path	Waypoint Identifier	Inbound Course °M(°T)	Magnetic Variation	Outbound Time (MIN)	Outbound Distance (NM)	Turn Direction	Minimum Altitude (FT)	Maximum Altitude (FT)	Speed (KIAS)	Navigation Specification
Hold	SWAMP	205 (197.0)	-7.5	1.0(-14000) 1.5(+14001)	-	L	11000	-	-230(-14000) -240(+14001)	RNAV1
Hold	PLEIA	141 (133.1)	-7.5	1.0(-14000) 1.5(+14001)	-	R	9000	-	-230(-14000) -240(+14001)	RNAV1
Hold	KARMA	168 (160.3)	-7.5	1.0(-14000) 1.5(+14001)	-	L	6000	-	-230(-14000) -240(+14001)	RNAV1
Hold	PEAKS	298 (290.2)	-7.5	1.0(-14000) 1.5(+14001)	-	L	4000	-	-230(-14000) -240(+14001)	RNAV1
Hold	TYLER	337 (329.8)	-7.5	1.0(-14000) 1.5(+14001)	-	L	3000	-	-230(-14000) -240(+14001)	RNAV1

CHANGE: MCGEE renamed. HLDG Pattern (PEAKS) established.

STANDARD ARRIVAL CHART - INSTRUMENT

RJAA / NARITA INTL

RNAV STAR RWY34L/34R

Waypoint Coordinates

Waypoint Identifier	Coordinates	Waypoint Identifier	Coordinates
AA455	352448.3N / 1410510.3E	MCGEE	353229.0N / 1410311.8E
AA456	351905.7N / 1410351.0E	MIFY	360232.1N / 1404959.5E
AA457	351403.4N / 1410019.2E	PEAKS	352507.2N / 1404352.7E
CORGI	353829.8N / 1405138.9E	PLEIA	360734.8N / 1404745.4E
DREAM	353853.3N / 1410023.9E	SWAMP	361914.4N / 1403217.0E
ELGAR	353129.2N / 1404527.4E	TYLER	352650.5N / 1403807.8E
HYDRA	350919.4N / 1405252.5E	UNARI	354513.8N / 1405737.1E
KARMA	355042.9N / 1405512.4E	VIXEN	361335.9N / 1403947.1E

CHANGE : MCGEE renamed