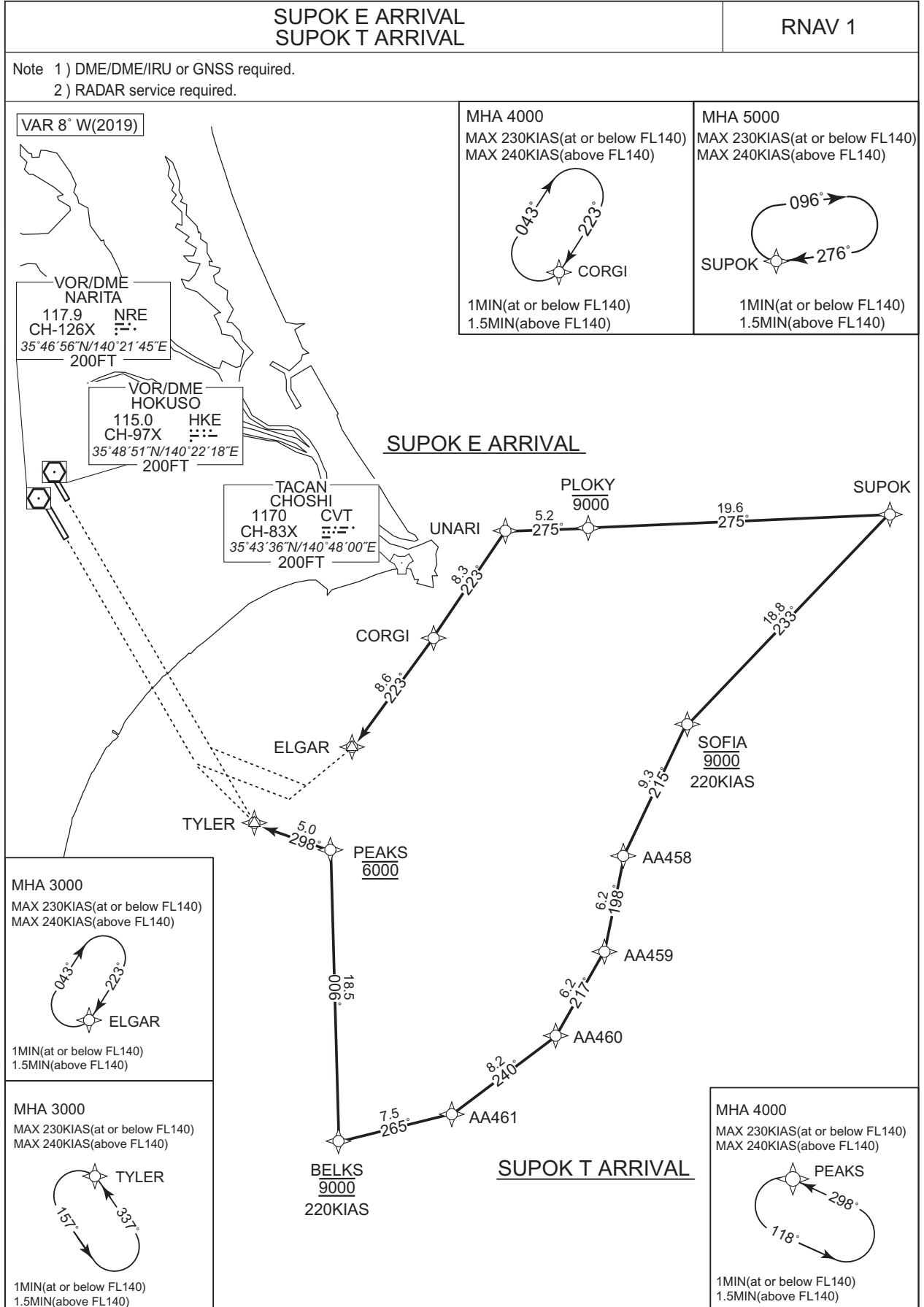


STANDARD ARRIVAL CHART - INSTRUMENT

RJAA / NARITA INTL

RNAV STAR RWY34L/34R



CHANGE: HLDG Pattern (PEAKS) established.

STANDARD ARRIVAL CHART - INSTRUMENT

RJAA / NARITA INTL

RNAV STAR RWY34L/34R

SUPOK E ARRIVAL

From SUPOK, to PLOKY at or below 9000FT, to UNARI, to CORGI, to ELGAR.

| | |
|------------------------|---|
| Critical DME | - |
| DME GAP | - |
| Inappropriate Nav aids | See AD1.1.6.10.3. Inappropriate NAVAIDs for RNAV1 |

| Serial Number | Path Descriptor | Waypoint Identifier | Fly Over | Course °M(°T) | Magnetic Variation | Distance (NM) | Turn Direction | Altitude (FT) | Speed (KIAS) | Vertical Angle | Navigation Specification |
|---------------|-----------------|---------------------|----------|----------------|--------------------|---------------|----------------|---------------|--------------|----------------|--------------------------|
| 001 | IF | SUPOK | - | - | -7.5 | - | - | - | - | - | RNAV1 |
| 002 | TF | PLOKY | - | 275 (267.9) | -7.5 | 19.6 | - | -9000 | - | - | RNAV1 |
| 003 | TF | UNARI | - | 275 (267.4) | -7.5 | 5.2 | - | - | - | - | RNAV1 |
| 004 | TF | CORGI | - | 223 (215.8) | -7.5 | 8.3 | - | - | - | - | RNAV1 |
| 005 | TF | ELGAR | - | 223 (215.7) | -7.5 | 8.6 | - | - | - | - | RNAV1 |

| Path | Waypoint Identifier | Inbound Course °M(°T) | Magnetic Variation | Outbound Time (MIN) | Outbound Distance (NM) | Turn Direction | Minimum Altitude (FT) | Maximum Altitude (FT) | Speed (KIAS) | Navigation Specification |
|------|---------------------|-----------------------|--------------------|----------------------------|------------------------|----------------|-----------------------|-----------------------|------------------------------|--------------------------|
| Hold | SUPOK | 276 (268.6) | -7.5 | 1.0(-14000) 1.5(+14001) | - | R | 5000 | - | -230(-14000) -240(+14001) | RNAV1 |
| Hold | CORGI | 223 (215.8) | -7.5 | 1.0(-14000) 1.5(+14001) | - | R | 4000 | - | -230(-14000) -240(+14001) | RNAV1 |
| Hold | ELGAR | 223 (215.7) | -7.5 | 1.0(-14000) 1.5(+14001) | - | R | 3000 | - | -230(-14000) -240(+14001) | RNAV1 |

CHANGE : New PROC

STANDARD ARRIVAL CHART - INSTRUMENT

RJAA / NARITA INTL

RNAV STAR RWY34L/34R

SUPOK T ARRIVAL

From SUPOK, to SOFIA at 9000FT, to AA458, to AA459, to AA460, to AA461, to BELKS at 9000FT, to PEAKS at 6000FT, to TYLER.

| | |
|-----------------------|---|
| Critical DME | - |
| DME GAP | - |
| Inappropriate Navaids | See AD1.1.6.10.3. Inappropriate NAVAIDS for RNAV1 |

| Serial Number | Path Descriptor | Waypoint Identifier | Fly Over | Course °M(°T) | Magnetic Variation | Distance (NM) | Turn Direction | Altitude (FT) | Speed (KIAS) | Vertical Angle | Navigation Specification |
|---------------|-----------------|---------------------|----------|----------------|--------------------|---------------|----------------|---------------|--------------|----------------|--------------------------|
| 001 | IF | SUPOK | - | - | -7.5 | - | - | - | - | - | RNAV1 |
| 002 | TF | SOFIA | - | 233 (225.2) | -7.5 | 18.8 | - | 9000 | 220 | - | RNAV1 |
| 003 | TF | AA458 | - | 215 (207.2) | -7.5 | 9.3 | - | - | - | - | RNAV1 |
| 004 | TF | AA459 | - | 198 (190.7) | -7.5 | 6.2 | - | - | - | - | RNAV1 |
| 005 | TF | AA460 | - | 217 (209.8) | -7.5 | 6.2 | - | - | - | - | RNAV1 |
| 006 | TF | AA461 | - | 240 (232.2) | -7.5 | 8.2 | - | - | - | - | RNAV1 |
| 007 | TF | BELKS | - | 265 (257.8) | -7.5 | 7.5 | - | 9000 | 220 | - | RNAV1 |
| 008 | TF | PEAKS | - | 006 (358.3) | -7.5 | 18.5 | - | 6000 | - | - | RNAV1 |
| 009 | TF | TYLER | - | 298 (290.2) | -7.5 | 5.0 | - | - | - | - | RNAV1 |

| Path | Waypoint Identifier | Inbound Course °M(°T) | Magnetic Variation | Outbound Time (MIN) | Outbound Distance (NM) | Turn Direction | Minimum Altitude (FT) | Maximum Altitude (FT) | Speed (KIAS) | Navigation Specification |
|------|---------------------|-----------------------|--------------------|----------------------------|------------------------|----------------|-----------------------|-----------------------|------------------------------|--------------------------|
| Hold | SUPOK | 276 (268.6) | -7.5 | 1.0(-14000) 1.5(+14001) | - | R | 5000 | - | -230(-14000) -240(+14001) | RNAV1 |
| Hold | PEAKS | 298 (290.2) | -7.5 | 1.0(-14000) 1.5(+14001) | - | L | 4000 | - | -230(-14000) -240(+14001) | RNAV1 |
| Hold | TYLER | 337 (329.8) | -7.5 | 1.0(-14000) 1.5(+14001) | - | L | 3000 | - | -230(-14000) -240(+14001) | RNAV1 |

Waypoint Coordinates

| Waypoint Identifier | Coordinates | Waypoint Identifier | Coordinates |
|---------------------|------------------------|---------------------|------------------------|
| AA458 | 352446.9N / 1410638.5E | PEAKS | 352507.2N / 1404352.7E |
| AA459 | 351840.7N / 1410513.6E | PLOKY | 354528.3N / 1410402.3E |
| AA460 | 351317.5N / 1410127.0E | SOFIA | 353300.1N / 1411149.9E |
| AA461 | 350814.0N / 1405329.6E | SUPOK | 354614.1N / 1412810.0E |
| BELKS | 350638.5N / 1404433.3E | TYLER | 352650.5N / 1403807.8E |
| CORGI | 353829.8N / 1405138.9E | UNARI | 354513.8N / 1405737.1E |
| ELGAR | 353129.2N / 1404527.4E | | |

CHANGE : HLDG Pattern (PEAKS) established