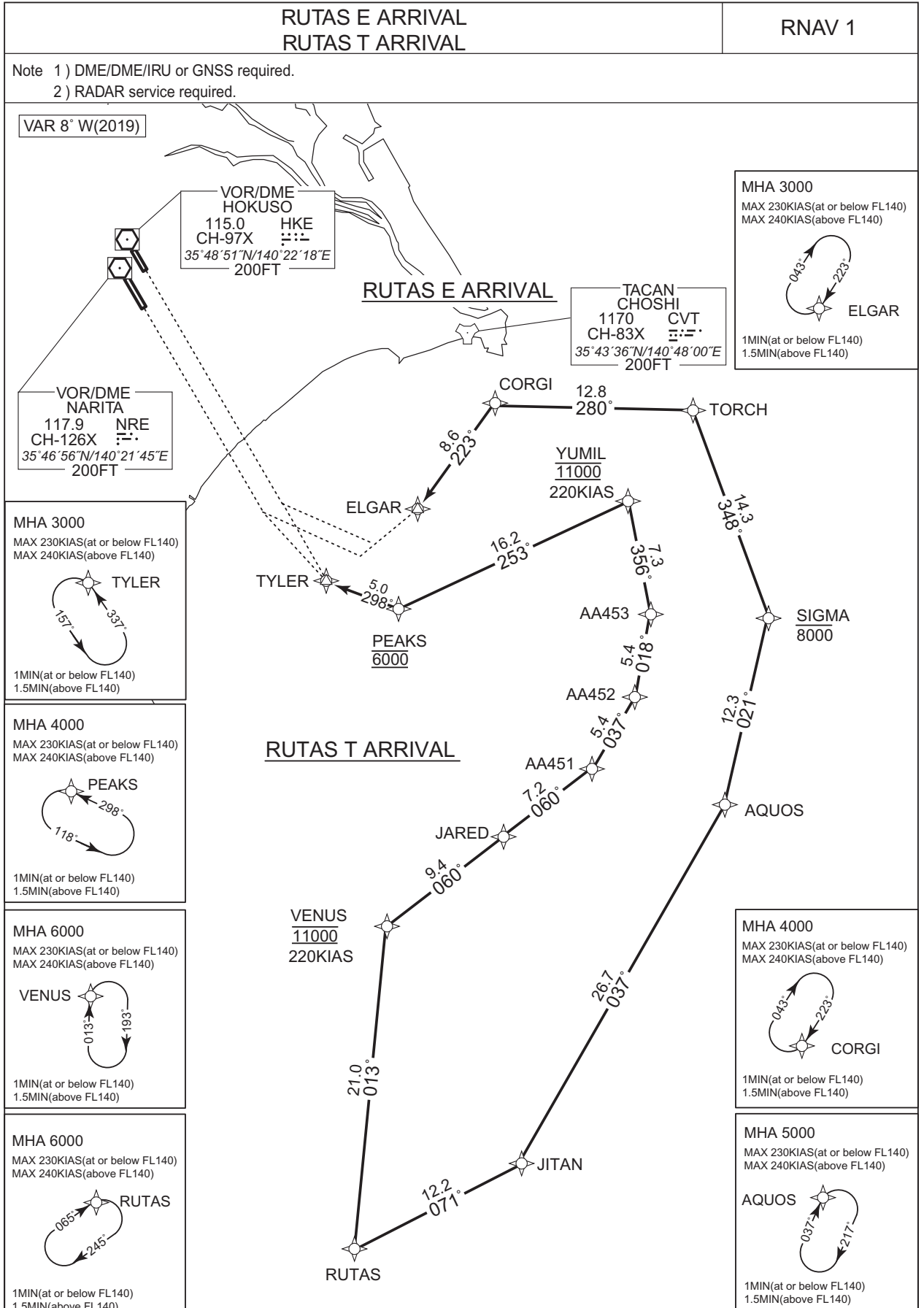


STANDARD ARRIVAL CHART - INSTRUMENT

RJAA / NARITA INTL

RNAV STAR RWY34L/34R



CHANGE: JARED renamed. HLDG Pattern (PEAKS) established.

STANDARD ARRIVAL CHART - INSTRUMENT

RJAA / NARITA INTL

RNAV STAR RWY34L/34R

RUTAS E ARRIVAL

From RUTAS, to JITAN, to AQUOS, to SIGMA at or below 8000FT, to TORCH, to CORGI, to ELGAR.

Critical DME	-
DME GAP	-
Inappropriate Nav aids	See AD1.1.6.10.3. Inappropriate NAVAIDs for RNAV1

Serial Number	Path Descriptor	Waypoint Identifier	Fly Over	Course °M(°T)	Magnetic Variation	Distance (NM)	Turn Direction	Altitude (FT)	Speed (KIAS)	Vertical Angle	Navigation Specification
001	IF	RUTAS	-	-	-7.5	-	-	-	-	-	RNAV1
002	TF	JITAN	-	071 (063.5)	-7.5	12.2	-	-	-	-	RNAV1
003	TF	AQUOS	-	037 (029.1)	-7.5	26.7	-	-	-	-	RNAV1
004	TF	SIGMA	-	021 (013.8)	-7.5	12.3	-	-8000	-	-	RNAV1
005	TF	TORCH	-	348 (340.3)	-7.5	14.3	-	-	-	-	RNAV1
006	TF	CORGI	-	280 (272.8)	-7.5	12.8	-	-	-	-	RNAV1
007	TF	ELGAR	-	223 (215.7)	-7.5	8.6	-	-	-	-	RNAV1

Path	Waypoint Identifier	Inbound Course °M(°T)	Magnetic Variation	Outbound Time (MIN)	Outbound Distance (NM)	Turn Direction	Minimum Altitude (FT)	Maximum Altitude (FT)	Speed (KIAS)	Navigation Specification
Hold	RUTAS	065 (057.9)	-7.5	1.0(-14000) 1.5(+14001)	-	R	6000	-	-230(-14000) -240(+14001)	RNAV1
Hold	AQUOS	037 (029.1)	-7.5	1.0(-14000) 1.5(+14001)	-	R	5000	-	-230(-14000) -240(+14001)	RNAV1
Hold	CORGI	223 (215.8)	-7.5	1.0(-14000) 1.5(+14001)	-	R	4000	-	-230(-14000) -240(+14001)	RNAV1
Hold	ELGAR	223 (215.7)	-7.5	1.0(-14000) 1.5(+14001)	-	R	3000	-	-230(-14000) -240(+14001)	RNAV1

CHANGE: Marginal note (Title)

STANDARD ARRIVAL CHART - INSTRUMENT

RJAA / NARITA INTL

RNAV STAR RWY34L/34R

RUTAS T ARRIVAL

From RUTAS, to VENUS at 11000FT, to JARED, to AA451, to AA452, to AA453, to YUMIL at 11000FT, to PEAKS at 6000FT, to TYLER.

Critical DME	-
DME GAP	-
Inappropriate NavAids	See AD1.1.6.10.3. Inappropriate NAVAIDs for RNAV1

Serial Number	Path Descriptor	Waypoint Identifier	Fly Over	Course °M(°T)	Magnetic Variation	Distance (NM)	Turn Direction	Altitude (FT)	Speed (KIAS)	Vertical Angle	Navigation Specification
001	IF	RUTAS	-	-	-7.5	-	-	-	-	-	RNAV1
002	TF	VENUS	-	013 (005.8)	-7.5	21.0	-	11000	220	-	RNAV1
003	TF	JARED	-	060 (052.3)	-7.5	9.4	-	-	-	-	RNAV1
004	TF	AA451	-	060 (052.1)	-7.5	7.2	-	-	-	-	RNAV1
005	TF	AA452	-	037 (029.7)	-7.5	5.4	-	-	-	-	RNAV1
006	TF	AA453	-	018 (010.7)	-7.5	5.4	-	-	-	-	RNAV1
007	TF	YUMIL	-	356 (348.2)	-7.5	7.3	-	11000	220	-	RNAV1
008	TF	PEAKS	-	253 (245.0)	-7.5	16.2	-	6000	-	-	RNAV1
009	TF	TYLER	-	298 (290.2)	-7.5	5.0	-	-	-	-	RNAV1

Path	Waypoint Identifier	Inbound Course °M(°T)	Magnetic Variation	Outbound Time (MIN)	Outbound Distance (NM)	Turn Direction	Minimum Altitude (FT)	Maximum Altitude (FT)	Speed (KIAS)	Navigation Specification
Hold	RUTAS	065 (057.9)	-7.5	1.0(-14000) 1.5(+14001)	-	R	6000	-	-230(-14000) -240(+14001)	RNAV1
Hold	VENUS	013 (005.8)	-7.5	1.0(-14000) 1.5(+14001)	-	R	6000	-	-230(-14000) -240(+14001)	RNAV1
Hold	PEAKS	298 (290.2)	-7.5	1.0(-14000) 1.5(+14001)	-	L	4000	-	-230(-14000) -240(+14001)	RNAV1
Hold	TYLER	337 (329.8)	-7.5	1.0(-14000) 1.5(+14001)	-	L	3000	-	-230(-14000) -240(+14001)	RNAV1

CHANGE: JARED renamed. HLDG Pattern (PEAKS) established.

STANDARD ARRIVAL CHART - INSTRUMENT

RJAA / NARITA INTL

RNAV STAR RWY34L/34R

Waypoint Coordinates

Waypoint Identifier	Coordinates	Waypoint Identifier	Coordinates
AA451	351449.2N / 1405911.3E	PEAKS	352507.2N / 1404352.7E
AA452	351930.7N / 1410228.5E	RUTAS	344349.3N / 1404034.2E
AA453	352449.7N / 1410342.2E	SIGMA	352425.5N / 1411318.3E
AQUOS	351229.7N / 1410942.5E	TORCH	353752.8N / 1410721.7E
CORGI	353829.8N / 1405138.9E	TYLER	352650.5N / 1403807.8E
ELGAR	353129.2N / 1404527.4E	VENUS	350440.1N / 1404309.7E
JARED	351024.8N / 1405215.4E	YUMIL	353158.6N / 1410151.7E
JITAN	344914.2N / 1405349.3E		

CHANGE: JARED renamed