

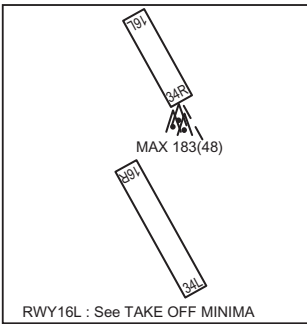
STANDARD DEPARTURE CHART -INSTRUMENT

RJAA / NARITA INTL

RNAV SID

REDEK TWO DEPARTURE		RNAV1
Note 1) DME/DME/IRU or GNSS required. ※ The aircraft equipped with only DME/DME/IRU must be able to update its position without delay at the starting point of take-off rolling. 2) RADAR service required.	Critical DME	RWY16R:TLD DER – 1.3NM FM DER RWY16L :TLD DER – 3.4NM FM DER
	DME GAP	RWY34L :DER – 1.3NM FM DER
	Inappropriate NavAids	See AD1.1.6.10.3.Inappropriate NAVAIDs for RNAV1

VAR 8° W(2019)

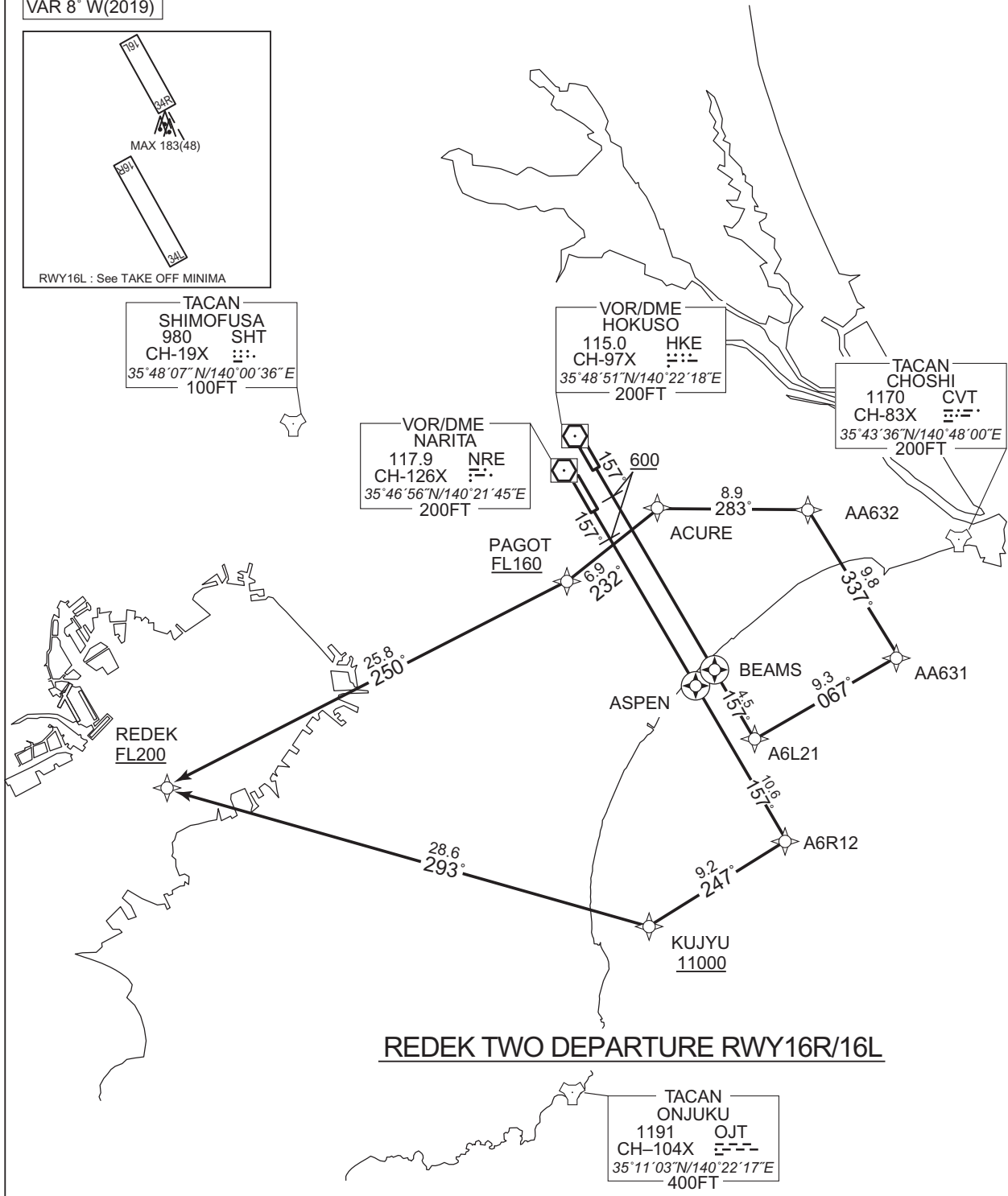


TACAN SHIMOFUSA
980 SHT
CH-19X
35°48'07"N/140°00'36"E
100FT

VOR/DME NARITA
117.9 NRE
CH-126X
35°46'56"N/140°21'45"E
200FT

VOR/DME HOKUSO
115.0 HKE
CH-97X
35°48'51"N/140°22'18"E
200FT

TACAN CHOSHI
1170 CVT
CH-83X
35°43'36"N/140°48'00"E
200FT

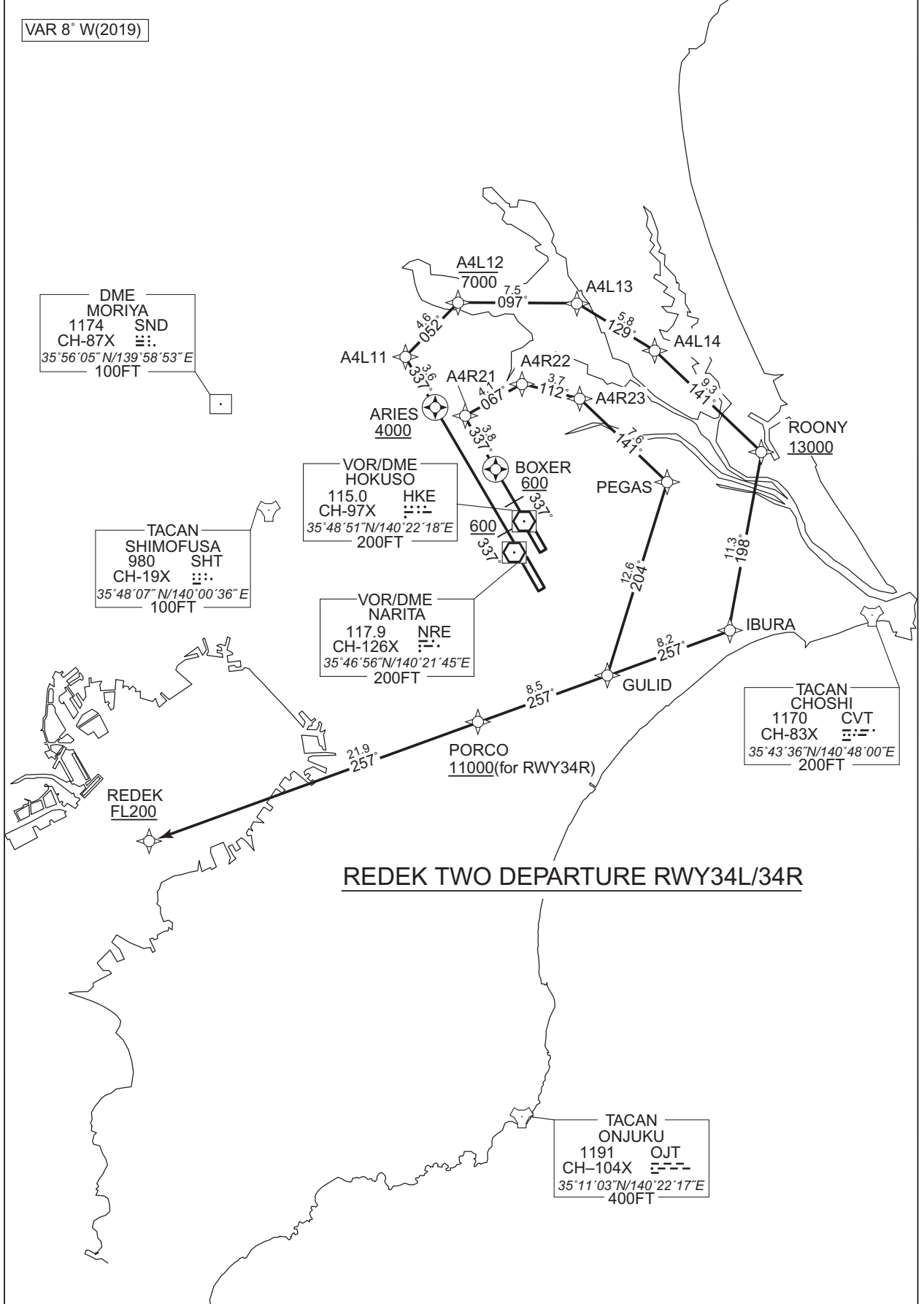


CHANGE : PROC renamed

STANDARD DEPARTURE CHART -INSTRUMENT

RJAA / NARITA INTL

RNAV SID



STANDARD DEPARTURE CHART -INSTRUMENT

RJAA / NARITA INTL

RNAV SID

REDEK TWO DEPARTURE

RWY16R : Climb on HDG 157° at or above 600FT, direct to ASPEN, to A6R12, to KUJYU at or above 11000FT, to REDEK at or above FL200.

RWY16L : Climb on HDG 157° at or above 600FT, direct to BEAMS, to A6L21, to AA631, to AA632, to ACURE, to PAGOT at or above FL160, to REDEK at or above FL200.

RWY34L : Climb on HDG 337° at or above 600FT, direct to ARIES at or above 4000FT, to A4L11, to A4L12 at or below 7000FT, to A4L13, to A4L14, to ROONY at or above 13000FT, to IBURA, to GULID, to PORCO, to REDEK at or above FL200.

RWY34R : Climb on HDG 337° at or above 600FT, direct to BOXER, to A4R21, to A4R22, to A4R23, to PEGAS, to GULID, to PORCO at or above 11000FT, to REDEK at or above FL200.

RWY16R *MUST be used for database coding.

Serial Number	Path Descriptor*	Waypoint Identifier	Fly Over	Course °M(°T)	Magnetic Variation	Distance (NM)	Turn Direction	Altitude (FT)	Speed (KIAS)	Vertical Angle	Navigation Specification
001	VA	-	-	157 (149.6)	-7.5	-	-	+600	-	-	RNAV1
002	DF	ASPEN	Y	-	-7.5	-	-	-	-	-	RNAV1
003	TF	A6R12	-	157 (149.7)	-7.5	10.6	-	-	-	-	RNAV1
004	TF	KUJYU	-	247 (239.5)	-7.5	9.2	-	+11000	-	-	RNAV1
005	TF	REDEK	-	293 (285.7)	-7.5	28.6	-	+FL200	-	-	RNAV1

RWY16L *MUST be used for database coding.

Serial Number	Path Descriptor*	Waypoint Identifier	Fly Over	Course °M(°T)	Magnetic Variation	Distance (NM)	Turn Direction	Altitude (FT)	Speed (KIAS)	Vertical Angle	Navigation Specification
001	VA	-	-	157 (149.6)	-7.5	-	-	+600	-	-	RNAV1
002	DF	BEAMS	Y	-	-7.5	-	-	-	-	-	RNAV1
003	TF	A6L21	-	157 (149.7)	-7.5	4.5	-	-	-	-	RNAV1
004	TF	AA631	-	067 (059.5)	-7.5	9.3	-	-	-	-	RNAV1
005	TF	AA632	-	337 (329.8)	-7.5	9.8	-	-	-	-	RNAV1
006	TF	ACURE	-	283 (275.3)	-7.5	8.9	-	-	-	-	RNAV1
007	TF	PAGOT	-	232 (224.1)	-7.5	6.9	-	+FL160	-	-	RNAV1
008	TF	REDEK	-	250 (242.6)	-7.5	25.8	-	+FL200	-	-	RNAV1

CHANGE : ALT Restriction on A4R23. PROC renamed.