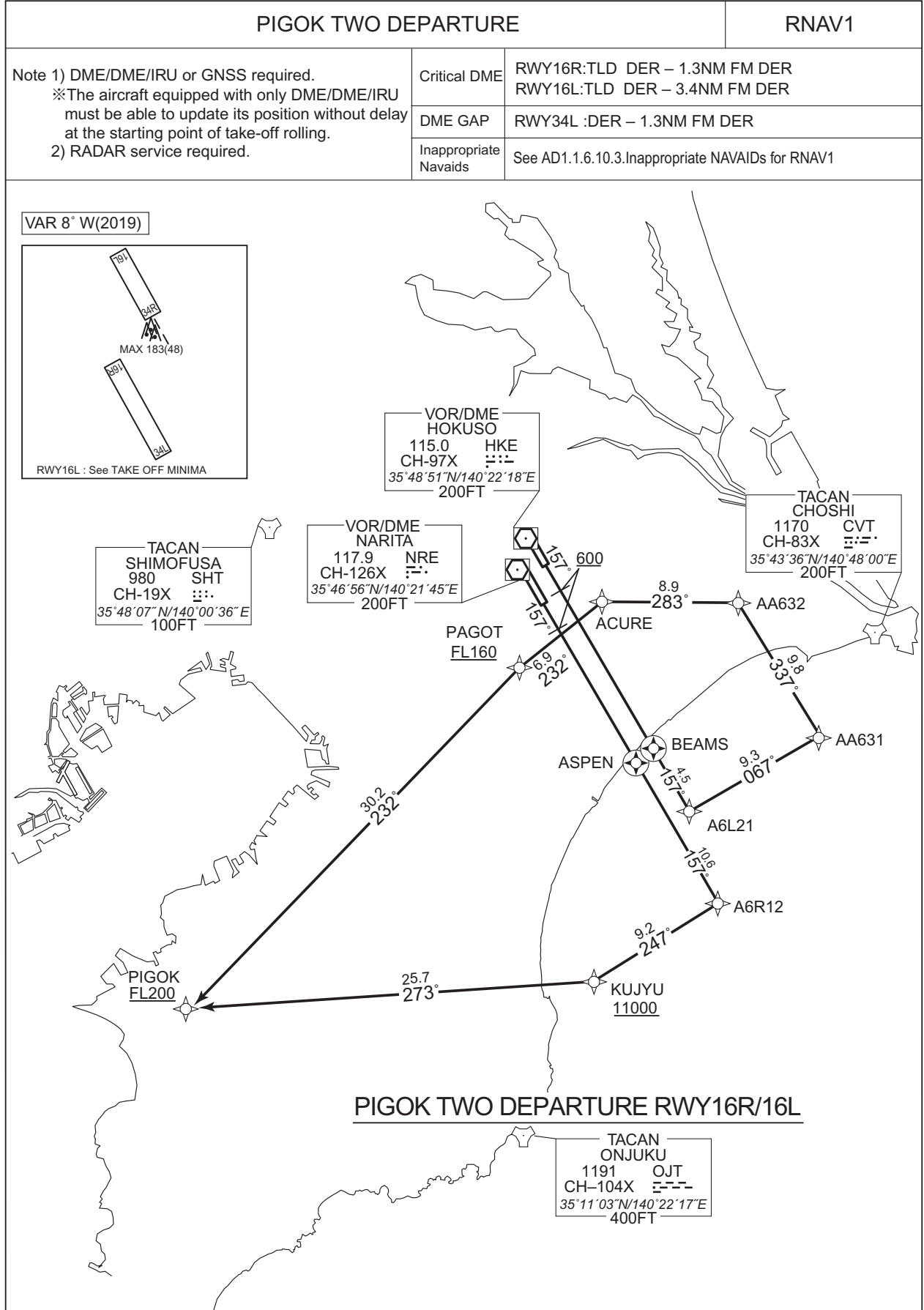


STANDARD DEPARTURE CHART -INSTRUMENT

RJAA / NARITA INTL

RNAV SID



STANDARD DEPARTURE CHART -INSTRUMENT

RJAA / NARITA INTL

RNAV SID

VAR 8° W(2019)

DME	MORIYA
1174	SND
CH-87X	⋮⋮
35°56'05"N/139°58'53"E	
100FT	

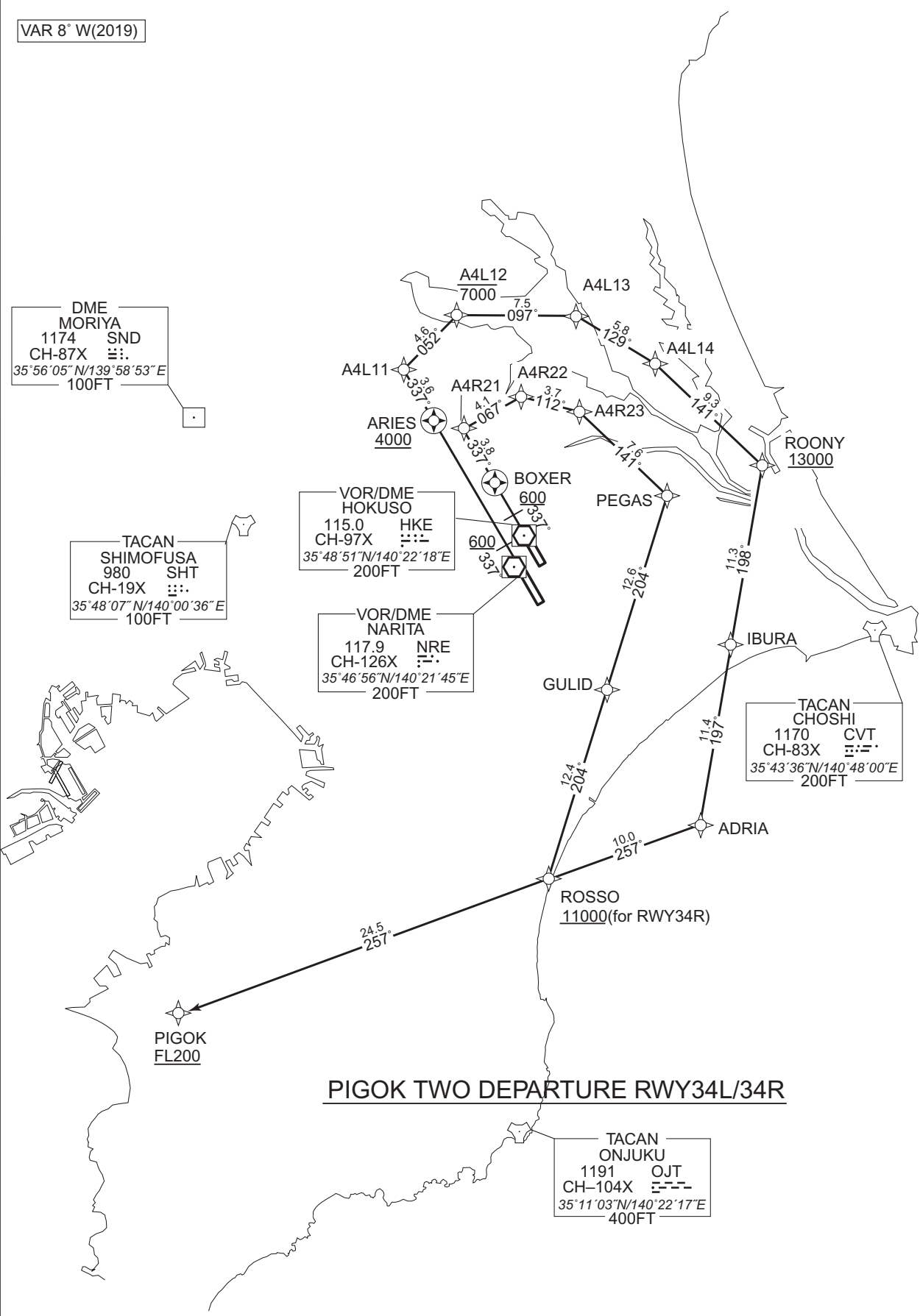
TACAN	SHIMOFUSA
980	SHT
CH-19X	⋮⋮
35°48'07"N/140°00'36"E	
100FT	

VOR/DME	HOKUSO
115.0	HKE
CH-97X	⋮⋮
35°48'51"N/140°22'18"E	
200FT	

VOR/DME	NARITA
117.9	NRE
CH-126X	⋮⋮
35°46'56"N/140°21'45"E	
200FT	

TACAN	CHOSHI
1170	CVT
CH-83X	⋮⋮
35°43'36"N/140°48'00"E	
200FT	

TACAN	ONJUKU
1191	OJT
CH-104X	⋮⋮
35°11'03"N/140°22'17"E	
400FT	



CHANGE : ALT Restriction on A4R23. PROC renamed.

PIGOK TWO DEPARTURE RWY34L/34R

STANDARD DEPARTURE CHART -INSTRUMENT

RJAA / NARITA INTL

RNAV SID

PIGOK TWO DEPARTURE

RWY16R : Climb on HDG 157° at or above 600FT, direct to ASPEN, to A6R12, to KUJYU at or above 11000FT, to PIGOK at or above FL200.

RWY16L : Climb on HDG 157° at or above 600FT, direct to BEAMS, to A6L21, to AA631, to AA632, to ACURE, to PAGOT at or above FL160, to PIGOK at or above FL200.

RWY34L : Climb on HDG 337° at or above 600FT, direct to ARIES at or above 4000FT, to A4L11, to A4L12 at or below 7000FT, to A4L13, to A4L14, to ROONY at or above 13000FT, to IBURA, to ADRIA, to ROSSO, to PIGOK at or above FL200.

RWY34R : Climb on HDG 337° at or above 600FT, direct to BOXER, to A4R21, to A4R22, to A4R23, to PEGAS, to GULID, to ROSSO at or above 11000FT, to PIGOK at or above FL200.

RWY16R *MUST be used for database coding.

Serial Number	Path Descriptor*	Waypoint Identifier	Fly Over	Course °M(°T)	Magnetic Variation	Distance (NM)	Turn Direction	Altitude (FT)	Speed (KIAS)	Vertical Angle	Navigation Specification
001	VA	-	-	157 (149.6)	-7.5	-	-	+600	-	-	RNAV1
002	DF	ASPEN	Y	-	-7.5	-	-	-	-	-	RNAV1
003	TF	A6R12	-	157 (149.7)	-7.5	10.6	-	-	-	-	RNAV1
004	TF	KUJYU	-	247 (239.5)	-7.5	9.2	-	+11000	-	-	RNAV1
005	TF	PIGOK	-	273 (265.3)	-7.5	25.7	-	+FL200	-	-	RNAV1

RWY16L *MUST be used for database coding.

Serial Number	Path Descriptor*	Waypoint Identifier	Fly Over	Course °M(°T)	Magnetic Variation	Distance (NM)	Turn Direction	Altitude (FT)	Speed (KIAS)	Vertical Angle	Navigation Specification
001	VA	-	-	157 (149.6)	-7.5	-	-	+600	-	-	RNAV1
002	DF	BEAMS	Y	-	-7.5	-	-	-	-	-	RNAV1
003	TF	A6L21	-	157 (149.7)	-7.5	4.5	-	-	-	-	RNAV1
004	TF	AA631	-	067 (059.5)	-7.5	9.3	-	-	-	-	RNAV1
005	TF	AA632	-	337 (329.8)	-7.5	9.8	-	-	-	-	RNAV1
006	TF	ACURE	-	283 (275.3)	-7.5	8.9	-	-	-	-	RNAV1
007	TF	PAGOT	-	232 (224.1)	-7.5	6.9	-	+FL160	-	-	RNAV1
008	TF	PIGOK	-	232 (224.0)	-7.5	30.2	-	+FL200	-	-	RNAV1

CHANGE : ALT Restriction on A4R23. PROC renamed.