

STANDARD DEPARTURE CHART -INSTRUMENT

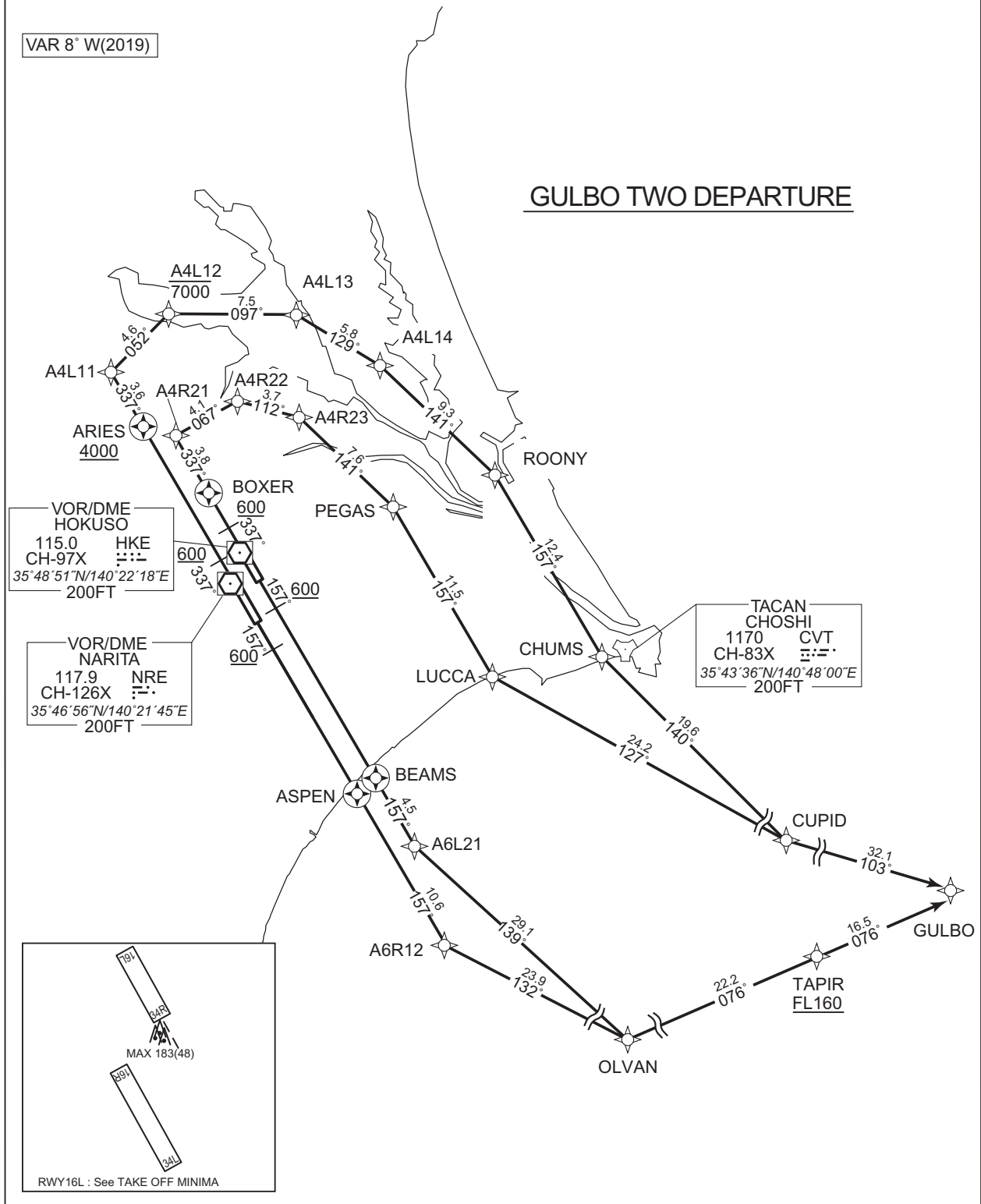
RJAA / NARITA INTL

RNAV SID

GULBO TWO DEPARTURE		RNAV1
Note 1) DME/DME/IRU or GNSS required. ※The aircraft equipped with only DME/DME/IRU must be able to update its position without delay at the starting point of take-off rolling. 2) RADAR service required.	Critical DME	RWY16R:TLD DER – 1.3NM FM DER RWY16L:TLD DER – 3.4NM FM DER
	DME GAP	RWY34L :DER – 1.3NM FM DER
	Inappropriate Nav aids	See AD1.1.6.10.3.Inappropriate NAVAIDs for RNAV1

VAR 8° W(2019)

GULBO TWO DEPARTURE



CHANGE : ALT Restriction on A4R23. PROC renamed.

STANDARD DEPARTURE CHART -INSTRUMENT

RJAA / NARITA INTL

RNAV SID

GULBO TWO DEPARTURE

RWY16R : Climb on HDG 157° at or above 600FT, direct to ASPEN, to A6R12, to OLVAN, to TAPIR at or above FL160, to GULBO.

RWY16L : Climb on HDG 157° at or above 600FT, direct to BEAMS, to A6L21, to OLVAN, to TAPIR at or above FL160, to GULBO.

RWY34L : Climb on HDG 337° at or above 600FT, direct to ARIES at or above 4000FT, to A4L11, to A4L12 at or below 7000FT, to A4L13, to A4L14, to ROONY, to CHUMS, to CUPID, to GULBO.

RWY34R : Climb on HDG 337° at or above 600FT, direct to BOXER, to A4R21, to A4R22, to A4R23, to PEGAS, to LUCCA, to CUPID, to GULBO.

RWY16R \*MUST be used for database coding.

Serial Number	Path Descriptor*	Waypoint Identifier	Fly Over	Course °M(^T)	Magnetic Variation	Distance (NM)	Turn Direction	Altitude (FT)	Speed (KIAS)	Vertical Angle	Navigation Specification
001	VA	-	-	157 (149.6)	-7.5	-	-	+600	-	-	RNAV1
002	DF	ASPEN	Y	-	-7.5	-	-	-	-	-	RNAV1
003	TF	A6R12	-	157 (149.7)	-7.5	10.6	-	-	-	-	RNAV1
004	TF	OLVAN	-	132 (124.2)	-7.5	23.9	-	-	-	-	RNAV1
005	TF	TAPIR	-	076 (068.0)	-7.5	22.2	-	+FL160	-	-	RNAV1
006	TF	GULBO	-	076 (068.3)	-7.5	16.5	-	-	-	-	RNAV1

RWY16L \*MUST be used for database coding.

Serial Number	Path Descriptor*	Waypoint Identifier	Fly Over	Course °M(^T)	Magnetic Variation	Distance (NM)	Turn Direction	Altitude (FT)	Speed (KIAS)	Vertical Angle	Navigation Specification
001	VA	-	-	157 (149.6)	-7.5	-	-	+600	-	-	RNAV1
002	DF	BEAMS	Y	-	-7.5	-	-	-	-	-	RNAV1
003	TF	A6L21	-	157 (149.7)	-7.5	4.5	-	-	-	-	RNAV1
004	TF	OLVAN	-	139 (131.8)	-7.5	29.1	-	-	-	-	RNAV1
005	TF	TAPIR	-	076 (068.0)	-7.5	22.2	-	+FL160	-	-	RNAV1
006	TF	GULBO	-	076 (068.3)	-7.5	16.5	-	-	-	-	RNAV1

CHANGE : ALT Restriction on A4R23. PROC renamed.